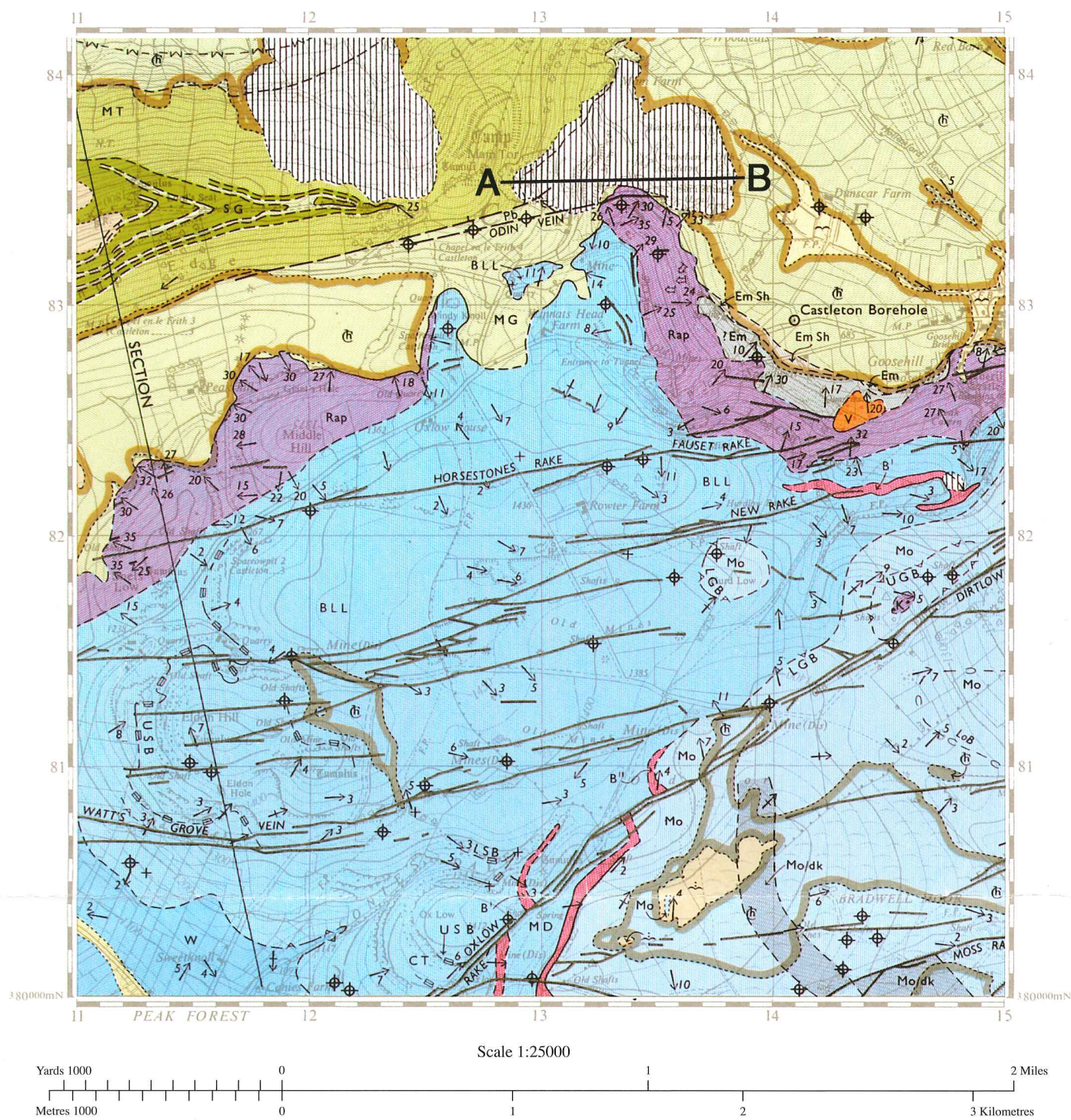
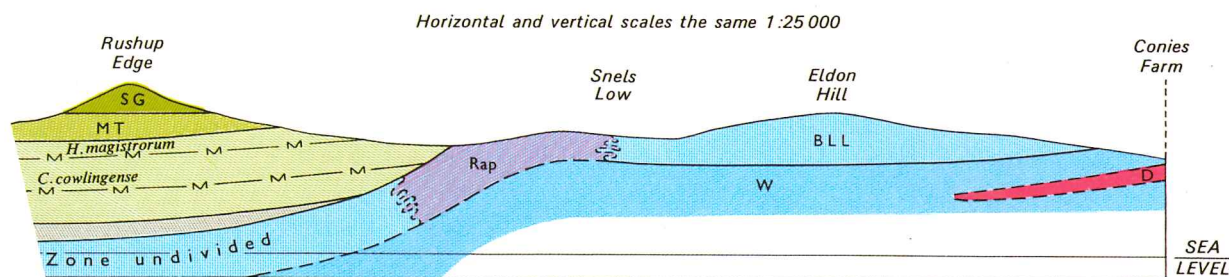


WELSH JOINT EDUCATION COMMITTEE
454/01-A
ADVANCED GEOLOGY GL4
JUNE 2005
Extract from CASTLETON (Solid with Drift)
1:25 000



**CROSS SECTION SHOWING THE GENERAL RELATIONS OF THE ROCKS
 ALONG THE LINE DRAWN ON THE MAP**

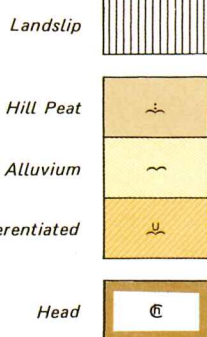


**EXPLANATION OF GEOLOGICAL
 SYMBOLS AND COLOURS**

Not drawn to scale

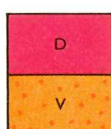
DRIFT

PLEISTOCENE AND RECENT



IGNEOUS INTRUSIVE

Dolerite (see horizontal section)
 Tuff or agglomerate in volcanic vent



- + Horizontal strata
- ↘ Gently inclined strata
- 5↘ Inclined strata, dip in degrees
- ↗ Anticlinal axis
- Geological boundary, Drift
- Geological boundary, Solid
- └ Fault at surface, crossmark indicates downthrow side
- └ Mineral vein (lead ores); where veins are also faults, crossmark indicates downthrow side
- Pb Concealed crop of mineral vein (Pb lead)
- M-M- Marine Band
- B-B- Brachiopod Band
- C-C- Coral Band
- Broken lines denote uncertainty
- Borehole
- △ Borehole, exact site uncertain
- ⊕ Pit or mine-shaft, abandoned
- ⚡ Adit or mine-mouth, abandoned, showing direction of entry

GENERALIZED GEOLOGICAL COLUMN

Scale 1:2500

UPPER CARBONIFEROUS

Shale Grit
SG
Mam Tor Beds
MT
Edale Shales
MG
Shales

Marine bands
(-M-)

Eyam Limestones with Knoll-reefs (K) and Flat reefs (KF) (also Beach Beds of Castleton)

Local unconformity
Colonial coral bands (-C-)

Monsal Dale Beds

Knoll-reef

LOWER CARBONIFEROUS

Bee Low Limestones (BLL)*

Apron-Reef (Rap)

Upper Miller's Dale Lava
Miller's Dale Beds
Lower Miller's Dale Lava (B¹) and Pindale Tuff (Z)

Chee Tor Rock

Woo Dale Beds

* Where the Lower Miller's Dale Lava is absent the Miller's Dale Beds and Chee Tor Rock are together known as the Bee Low Limestones (BLL)

Reproduced by permission
 of the Director
 British Geological Survey
 © NERC
 All rights reserved